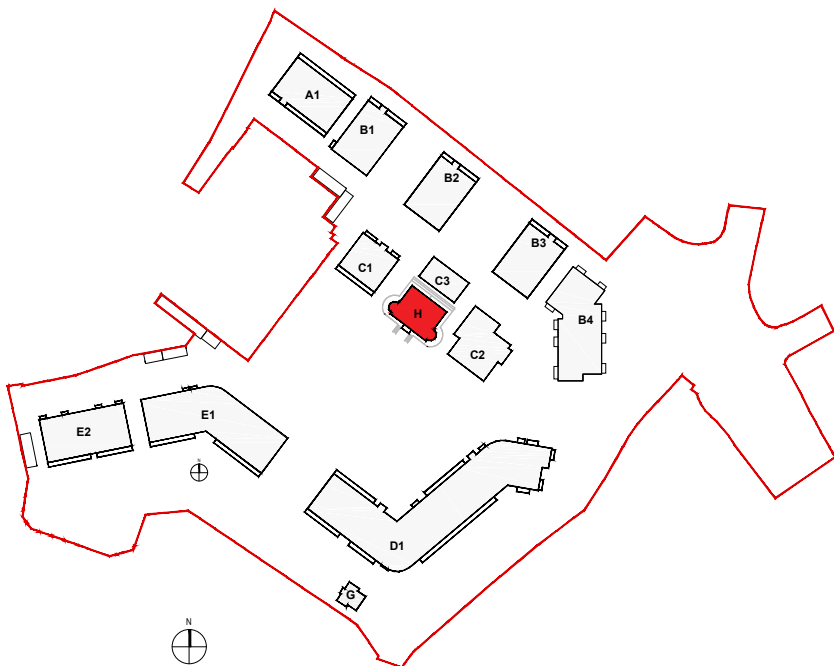


EXISTING SECTION 2-2 - St. Teresa's House

NOTE:

- ORIGINAL SURVEY INFORMATION FROM MURPHY SURVEYS
- DRAWING ASSEMBLED BY OMP
- DRAWINGS TO BE READ IN CONJUNCTION WITH CONSERVATION ARCHITECTS REPORT



Revision Description	Date	Rev. No.	Issued by

Figured dimensions only to be used. This drawing is copyright of O'Mahony Pike Architects Ltd. All information is shared as per approved use in accordance with BS1192(2007) + A2(2016), Table 5; Standard Codes for Suitability of Models and Documents. If 'Information Approval Check' is empty, this information has been shared at S0 - WIP.

omahony pike			Project No.: 1706A	Scale @ A1: 1:50
			Project Lead: DM	Date Printed: 17.12.2021
architecture urban design email: info@omahonypike.com tel: +353 1 202 7400 fax: +353 1 283 0822 www.omahonypike.com	Dublin The Chapel Mount St. Anne's Milltown, Dublin 6 D06 XN52 Ireland	Cork 26 South Mall Cork City Co. Cork T12 R2RV Ireland	Drawn By: CF/CPI	Current Rev.:
			Model No.: 1706A-OMP-PS01-ZZ-DR-A-3400	
			Purpose: PLANNING	

Project:	Proposed SHD
Location:	Lands at 'St. Teresa's', Temple Hill, Monkstown, Blackrock, Co. Dublin
Client:	Oval Target Limited

Drawing Title:	Existing Section 2-2 - St. Teresa's House
Drawing No.:	1706A-OMP-PS01-ZZ-DR-A-3401

Submittal - Checked By - Date